

project: **monastery church**  
 Bondrum 1:6, Tomelilla Kommun

**Den Helige  
 Benedictus Kloster**

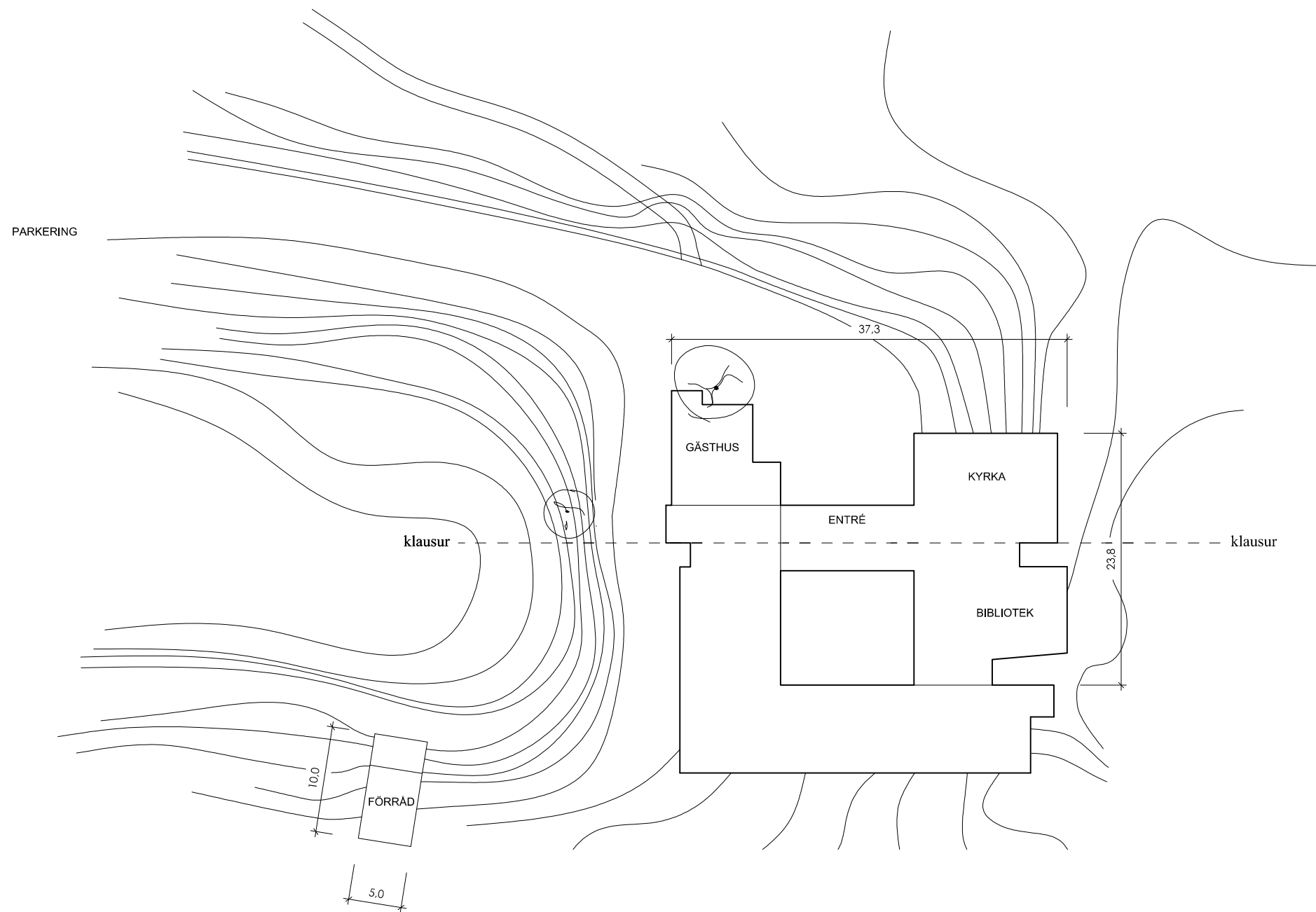
**SITUATIONSPLAN  
 1:2000**

ritn A01 2026-01-15

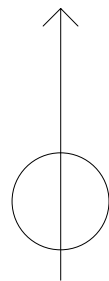
**BR AVE**  
 arkitektkontor

arkitekt sar msa Per-Olof Kippel  
 Käringatan 1, 273 97 Tomelilla

070-302 98 75  
 kippel@bravearkitektkontor.se



SITUATIONSPLAN 1:500



0 2 4 6 8 10 meter

"klausur" - den gräns fram till vilken allmänheten har tillträde

project: **monastery church**  
Bondrum 1:6, Tomelilla Kommun

**Den Helige  
Benedictus Kloster**

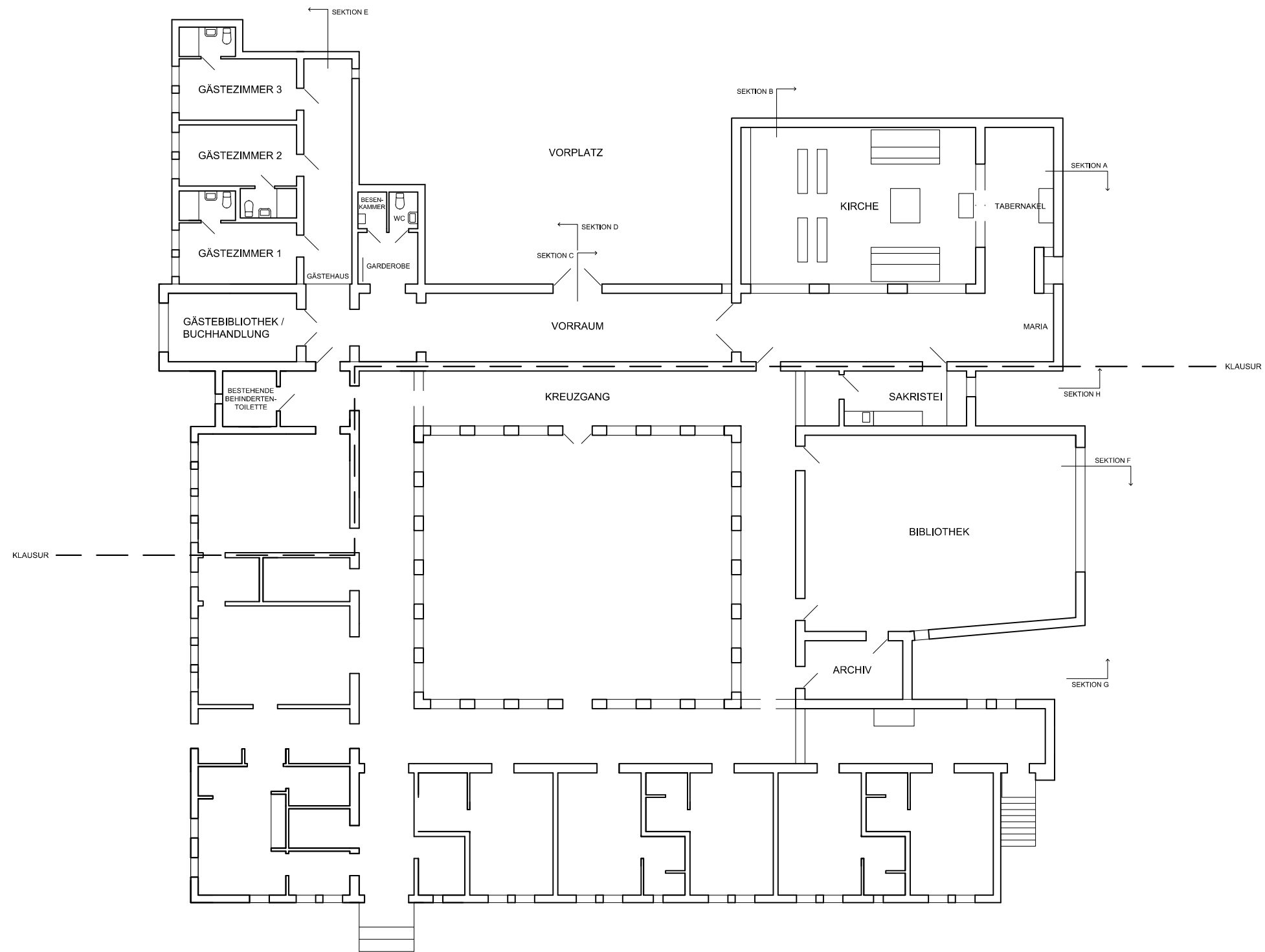
**SITUATIONSPLAN  
1:500**

ritn A02 2026-01-15

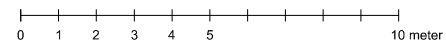
**BR AVE**  
arkitektkontor

arkitekt sar msa Per-Olof Kippel  
Kärngatan 1, 273 97 Tomelilla

070-302 98 75  
kippel@bravearkitektkontor.se



PLAN 1:200



project: **monastery church**  
Bondrum 1:6, Tomelilla Kommun

**Den Helige  
Benedictus Kloster**

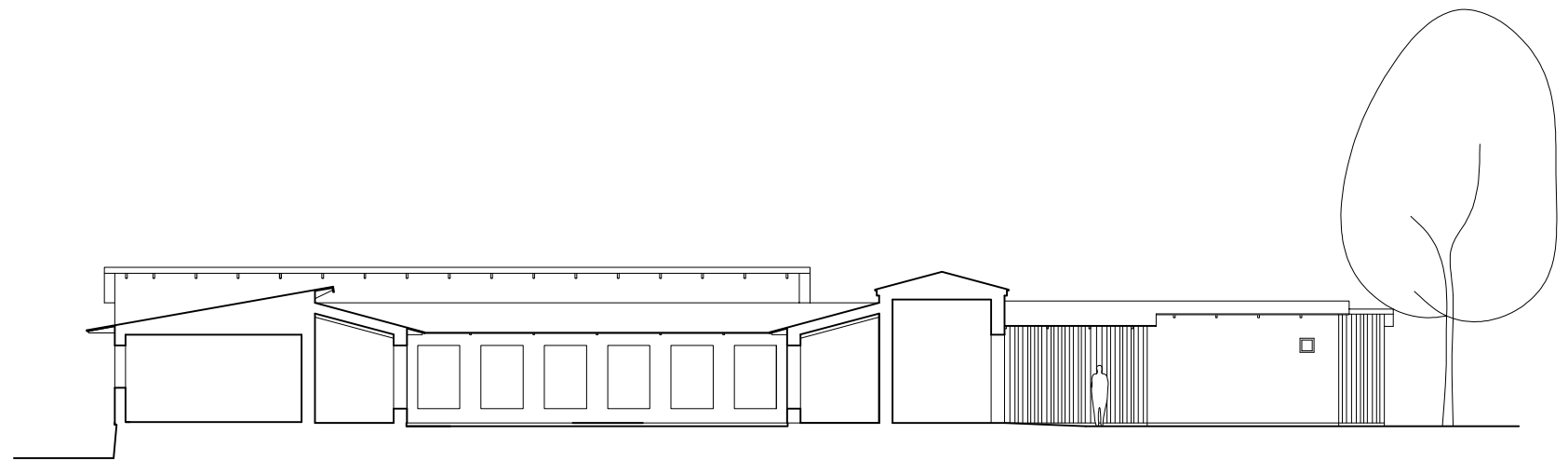
**PLAN  
1:200**

ritn A03deutsch 2026-01-15

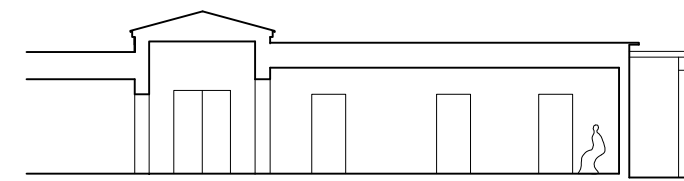
**BRAVE**  
arkitektkontor

arkitekt sar msa Per-Olof Kippel  
Kärngatan 1, 273 97 Tomelilla

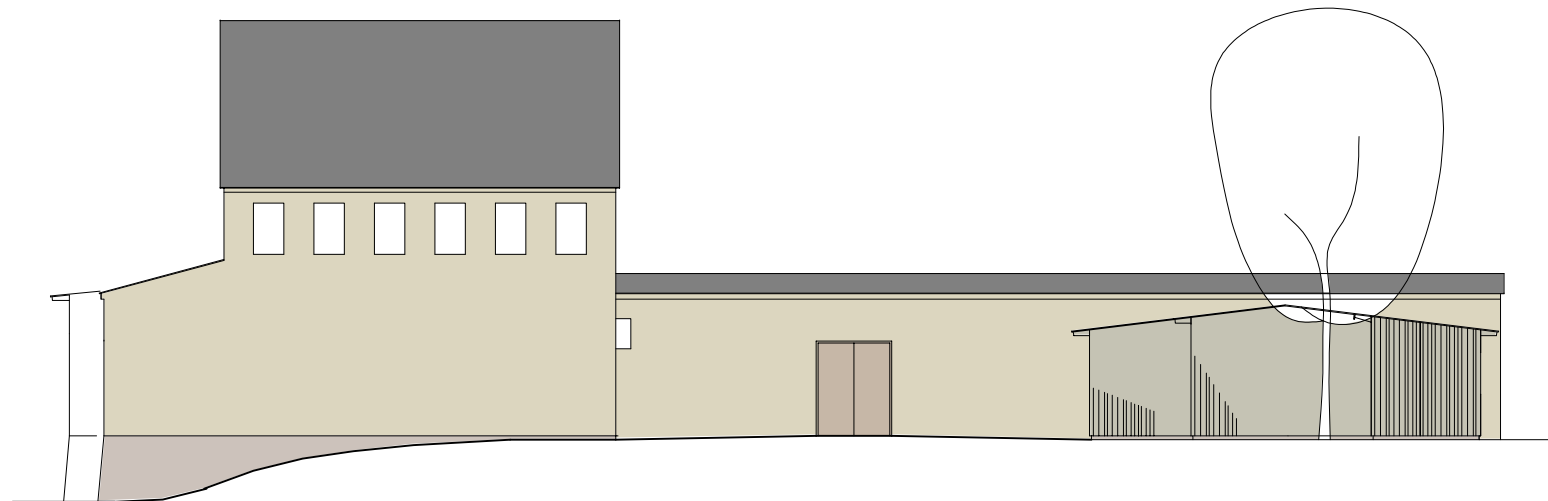
070-302 98 75  
kippel@bravearkitektkontor.se



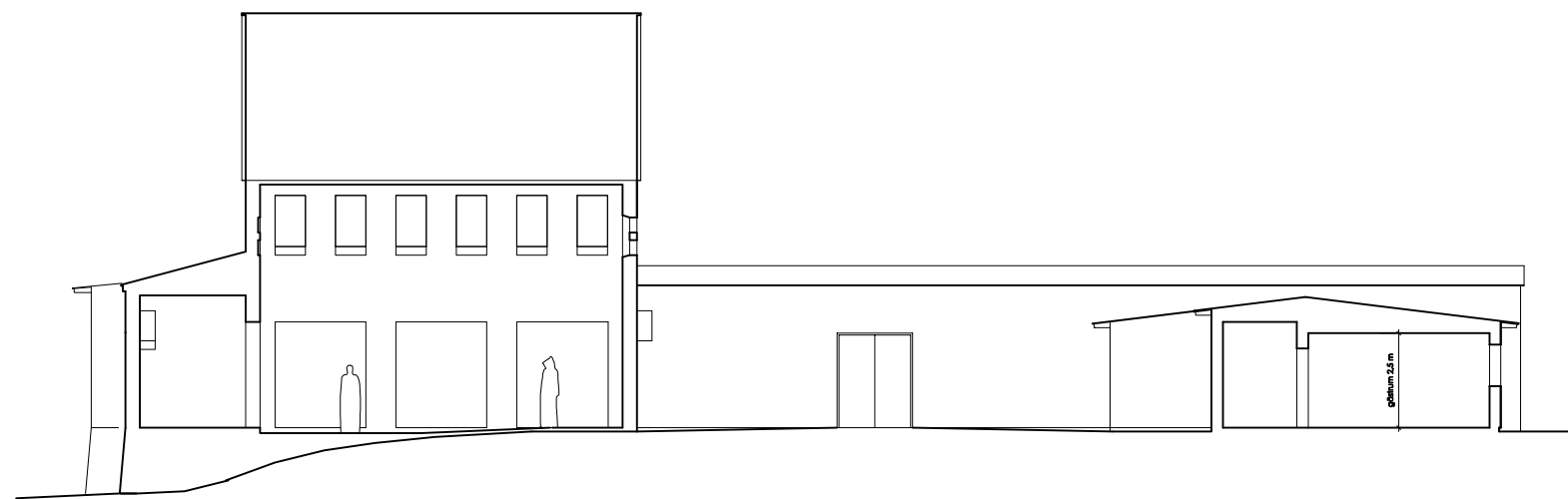
SEKTION D



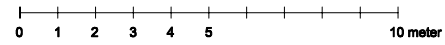
SEKTION E



FASAD MOT NORR



SEKTION A



project: **monastery church**  
Bondrum 1:6, Tomelilla Kommun

**Den Helige  
Benedictus Kloster**

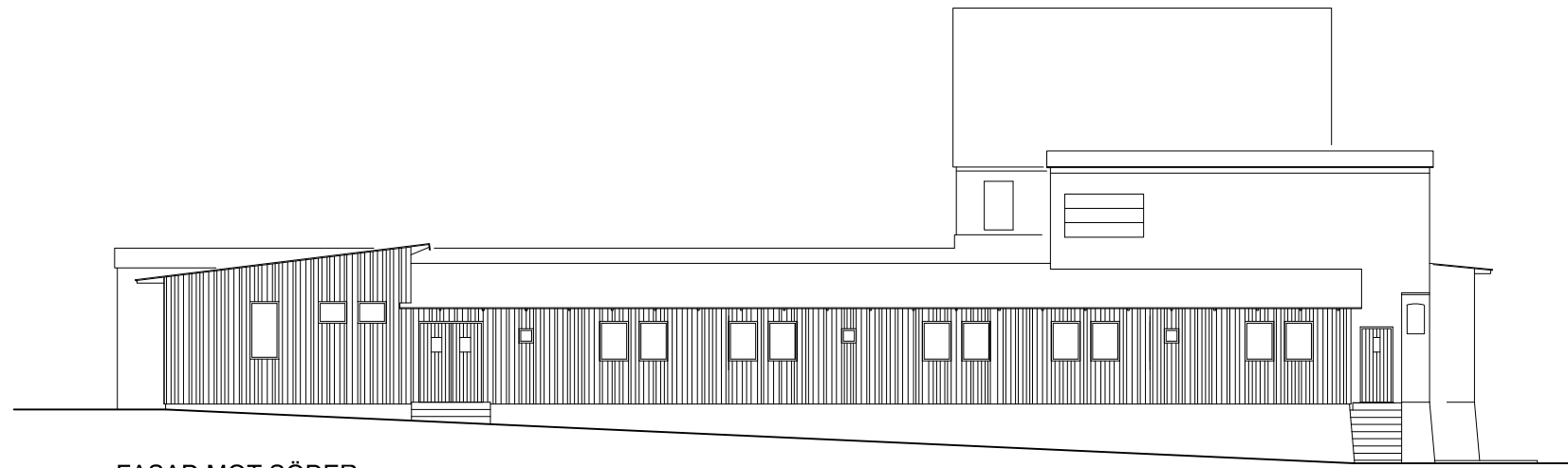
**FASAD,  
SEKTIONER  
1:200**

ritn A20 2026-01-06

**BR AVE**  
arkitektkontor

arkitekt sar msa Per-Olof Kippel  
Kärngatan 1, 273 97 Tomelilla

070-302 98 75  
kippel@bravearkitektkontor.se



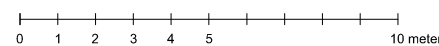
FASAD MOT SÖDER



FASAD MOT ÖSTER



FASAD MOT VÄSTER



project: **monastery church**  
Bondrum 1:6, Tomelilla Kommun

**Den Helige  
Benedictus Kloster**

**FASADER  
1:200**

ritn A22 2026-01-15

**BR AVE**  
arkitektkontor

arkitekt sar msa Per-Olof Kippel  
Kärngatan 1, 273 97 Tomelilla

070-302 98 75  
kippel@bravearkitektkontor.se